

THE ROOMS  
THE ROOMS  
THE ROOMS





## Double room with mountain or garden view

**Max Occupancy:** 3 adults or 2 adults + 1 child.

27m2 double room with 8m2 elegant furnished balcony & beautiful view to the “White Mountains “or hotel’s garden. It consists of a twin or double bed and a sitting corner, with a sofa that can be used as a bed for the 3rd person.

**Extra features:** Satellite TV with music channel, direct dial phone, free high speed Wi-Fi Internet connection (through DIA line), individual air condition/heating, tea & coffee making facilities (daily refill), electronic safe box free of charge, mini bar and marble bathroom with bathtub, phone, bathrobes, hairdryer and turndown service.

Upon request and with no charge we offer baby cot and a possibility of connecting door to the adjacent room, ideal choice for families.



## Double room with pool view

**Max Occupancy:** 3 adults or 2 adults + 1 child

27m2 double room with 8m2 elegant furnished balcony, overlooking the central pools of the hotel. It consists of a twin or double bed and a sitting corner, with a sofa that can be used as a bed for the 3rd person.

**Extra features:** Satellite TV with music channel, direct dial phone, free high speed Wi-Fi Internet connection (through DIA line), individual air condition/heating, tea & coffee making facilities (daily refill), electronic safe box free of charge, mini bar and marble bathroom with bathtub, phone, bathrobes, hairdryer and turndown service.

Upon request and with no charge we offer baby cot and a possibility of connecting door to the adjacent room, ideal choice for families.





## Double bungalow room

**Max Occupancy:** 3 adults or 2 adults + 2 children

29m<sup>2</sup> double room, with 8m<sup>2</sup> elegant furnished balcony or terrace with view to the beautiful gardens of the hotel, located in the bungalow area.

It consists of a twin or double bed and a sitting corner, with a sofa that can be used as a bed for the 3rd person. For the 4th person, an extra folded bed is used.

**Extra features:** Satellite TV with music channel, direct dial phone, free high speed Wi-Fi Internet connection (through DIA line), individual air condition/heating, tea & coffee making facilities (daily refill), electronic safe box free of charge, mini bar and marble bathroom with bathtub, phone, bathrobes, hairdryer and turndown service.

Baby bed is offered free of charge & upon request.



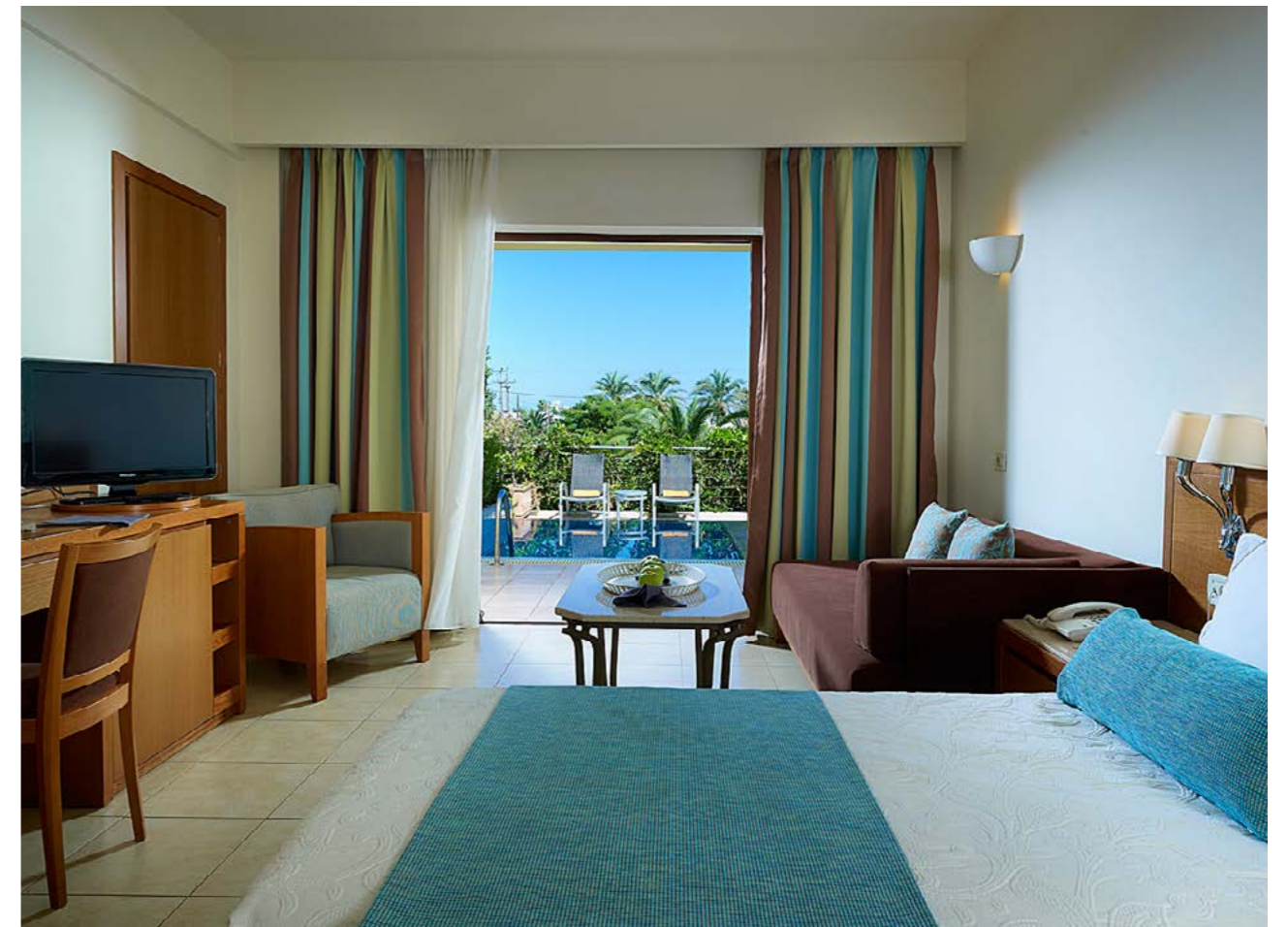
## Double bungalow room with private pool

**Max Occupancy:** 3 adults or 2 adults + 2 children

27m<sup>2</sup> double room, with 11m<sup>2</sup> - 12m<sup>2</sup> private outdoor pool, equipped with sun loungers and pool towels. It is located in the bungalow area, and has view to the beautiful gardens of the hotel. It consists of a twin or double bed and a sitting corner, with a sofa that can be used as a bed for the 3rd person. For the 4th person, an extra folded bed is used.

**Extra features:** Satellite TV with music channel, direct dial phone, free high speed Wi-Fi Internet connection (through DIA line), individual air condition/heating, tea & coffee making facilities (daily refill), electronic safe box free of charge, mini bar and marble bathroom with bathtub, phone, bathrobes, hairdryer and turndown service.

Baby bed is offered free of charge & upon request.







## Executive suite

**Max Occupancy:** 3 adults or 2 adults + 2 children

60m<sup>2</sup> suite located in the main building. It consists of 1 bedroom with double bed and 1 separate living room and has elegant furnished terrace overlooking the central pools of the hotel and the sea.

**Extra features:** 2 Satellite TVs (one in each room) with music channel, direct dial phone, free high speed Wi-Fi Internet connection (through DIA line), individual air condition cooling/heating, tea & coffee making facilities (daily refill), Espresso machine, mini bar, DVD player, mini Hi-Fi, bathrobes, electronic safe box free of charge, 1 marble bathroom with bathtub, phone, hairdryer and 1 separate bathroom with shower and turndown service.

Baby bed is offered free of charge & upon request.





## Bungalow suite with private pool

**Max Occupancy:** 3 adults or 2 adults + 2 children

45m<sup>2</sup> suite located in the bungalow area, consists of 1 bedroom with double bed and 1 separate living room and a private 15m<sup>2</sup> outdoor pool, with Jacuzzi equipped with sun loungers and pool towels with view to the pools of the hotel.

**Extra features:** 2 Satellite TVs (one in each room) with music channel, direct dial phone, free high speed Wi-Fi Internet connection (through DIA line), individual air condition/heating, tea & coffee making facilities (daily refill), Espresso machine, mini bar, electronic safe free of charge, 1 marble bathroom with bathtub, phone, bathrobes, hairdryer and turndown service.

Baby bed is offered free of charge & upon request.







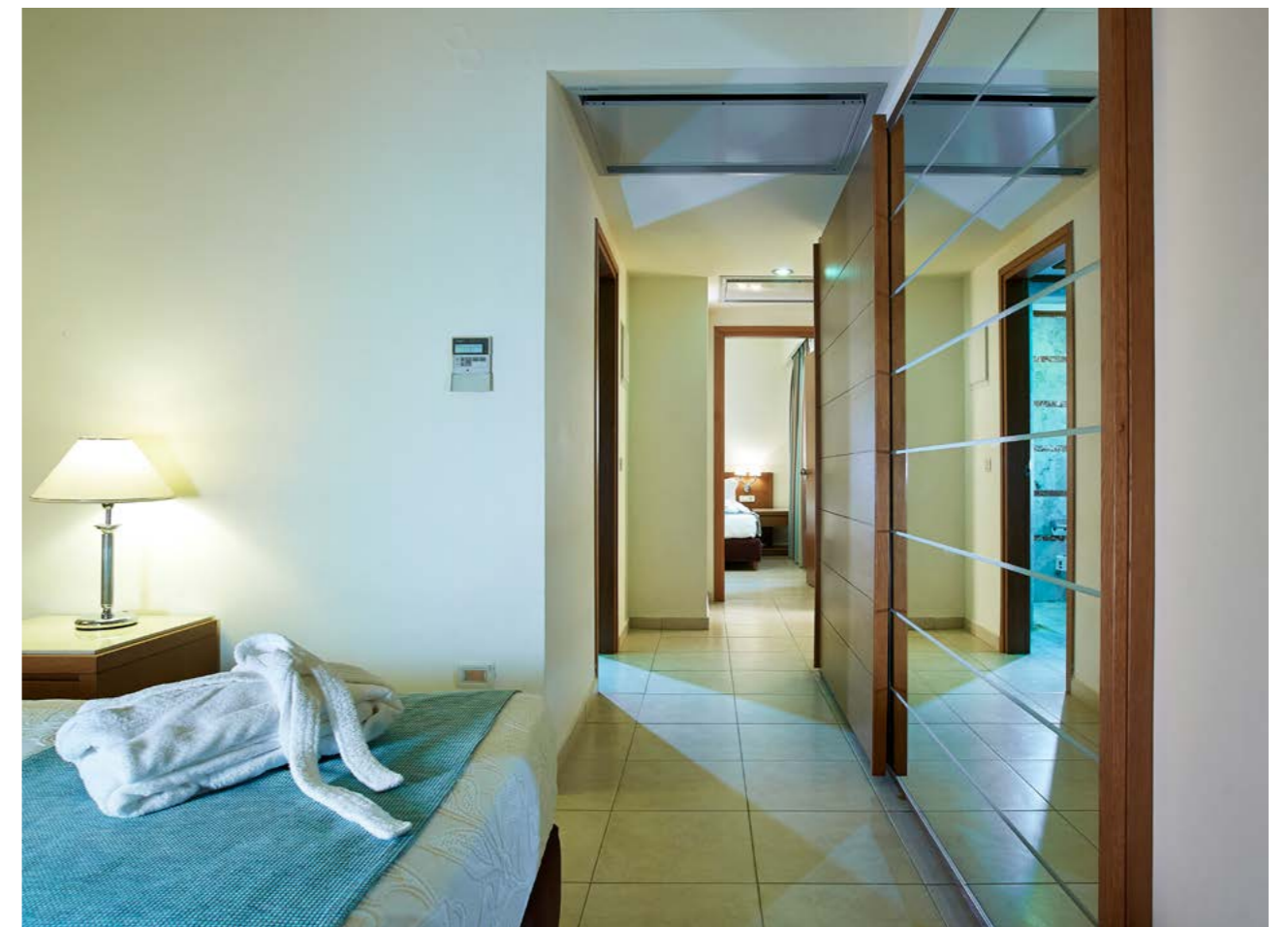
## Bungalow family suite

**Max occupancy:** 4 adults

45m<sup>2</sup> suite located in the bungalow area & consists of 2 separate bedrooms with twin beds, which makes it ideal choice for families. Its balcony is also elegantly furnished and has view to the central pools of the hotel.

**Extra features:** 2 Satellite TVs (one in each room) with music channel, direct dial phone, free high speed Wi-Fi Internet connection (through DIA line), individual air condition/heating, tea & coffee making facilities (daily refill), mini bar, electronic safe box free of charge, 1 marble bathroom with bathtub, phone, bathrobes, hairdryer and turndown service.

Baby bed is offered free of charge & upon request.





# Imperial double room

**Max occupancy:** 3 adults or 2 adults + 1 child

32m2 luxury double room located in the Imperial Building by the beach, with 8 m2 elegantly furnished balcony facing the water features. It consists of a double bed or two twin beds and a sitting corner with a sofa that can be used for the 3rd person as bed.

**Extra features:** 40" Satellite Smart TV with music channel, direct dial phone, free high speed Wi-Fi Internet connection (through DIA line), individual air condition/heating, mini bar, tea & coffee making facilities (daily refill), Espresso machine, electronic safe box free of charge, marble bathroom with separate bathtub and shower, phone, bathrobes, hair-dryer and turndown service.

Upon request and with no charge we offer baby cot and a possibility of connecting door to the adjacent room, ideal choice for families.



# Imperial double sea view // side sea view room

**Max occupancy:** 3 adults or 2 adults + 1 child

32m2 luxury double room located in the Imperial Building by the beach, with 8 m2 elegantly furnished balcony with side sea view or sea view. It consists of a double bed or two twin beds and a sitting corner with a sofa that can be used for the 3rd person as bed.

**Extra features:** 40" Satellite Smart TV with music channel, direct dial phone, free high speed Wi-Fi Internet connection (through DIA line), individual air condition/heating, mini bar, tea & coffee making facilities (daily refill), Espresso machine, electronic safe box free of charge, marble bathroom with separate bathtub and shower, phone, bathrobes, hair-dryer and turndown service.

Baby bed is offered free of charge & upon request.







## Imperial double private pool room

**Max occupancy:** 3 adults or 2 adults + 1 child.

32m<sup>2</sup> luxury double room located in the Imperial Building by the beach, with its own 12m<sup>2</sup> - 14m<sup>2</sup> private outdoor pool, equipped with sun loungers. It has pool view or sea view. It consists of a double bed and a sitting corner with a sofa that can be used as bed for the 3rd person.

**Extra features:** 40" LCD Satellite TV with music channel, direct dial phone, free Wi-Fi Internet connection, individual air condition/heating, mini bar, electronic safe box free of charge, marble bathroom with separate bathtub and shower, phone, hairdryer and tea & coffee making facilities (daily refill). Afternoon maid service is also offered.

Baby bed is offered free of charge & upon request.





## Imperial double water front room

**Max occupancy:** 3 adults or 2 adults + 1 child

32m2 luxury double room located on the 1st floor of the Imperial Building by the beach, with 8 m2 elegantly furnished balcony, on the beach front. It consists of a double bed or two twin beds and a sitting corner with a sofa that can be used for the 3rd person as bed.

**Extra features:** 40" Satellite Smart TV with music channel, direct dial phone, free high speed Wi-Fi Internet connection (through DIA line), individual air condition/heating, mini bar, tea & coffee making facilities (daily refill), Espresso machine, electronic safe box free of charge, marble bathroom with separate bathtub and shower, phone, bathrobes, hair-dryer and turndown service.

Baby bed is offered free of charge & upon request.



## Imperial double private pool water front room

**Max occupancy:** 3 adults or 2 adults + 1 child

32m2 luxury double room located in the Imperial Building on the beach, with its own 12m2 - 14m2 private outdoor pool, equipped with sun loungers and pool towels. It is located on the ground floor and beach front. It consists of a double bed and a sitting corner with a sofa that can be used for the 3rd person as bed.

**Extra features:** 40" Satellite Smart TV with music channel, direct dial phone, free high speed Wi-Fi Internet connection (through DIA line), individual air condition/heating, mini bar, tea & coffee making facilities (daily refill), Espresso machine, electronic safe box free of charge, marble bathroom with separate bathtub and shower, phone, bathrobes, hair-dryer and turndown service.

Baby bed is offered free of charge & upon request.







## Imperial suite with private pool on the water front

**Max occupancy:** 3 adults or 2 adults + 2 children

65m<sup>2</sup> luxury suite located in the Imperial Building on the beach, with its own private pool of 20m<sup>2</sup>, equipped with sun loungers and pool towels. It is located on the ground floor and it is on the beach front. It is consisted of one bedroom with double bed and one separate living room.

**Extra features:** 2 40" Satellite Smart TVs (one in each room) with music channel, direct dial phone, free high speed Wi-Fi Internet connection (through DIA line), individual air condition/heating, mini bar, electronic safe box free of charge, bathrobes, 1 marble bathroom with bathtub/Jacuzzi, phone, tea & coffee making facilities (daily refill), Espresso machine, hairdryer and 1 separate bathroom with shower and turndown service. Baby bed is offered free of charge & upon request

Free private transfer from the airport of Chania







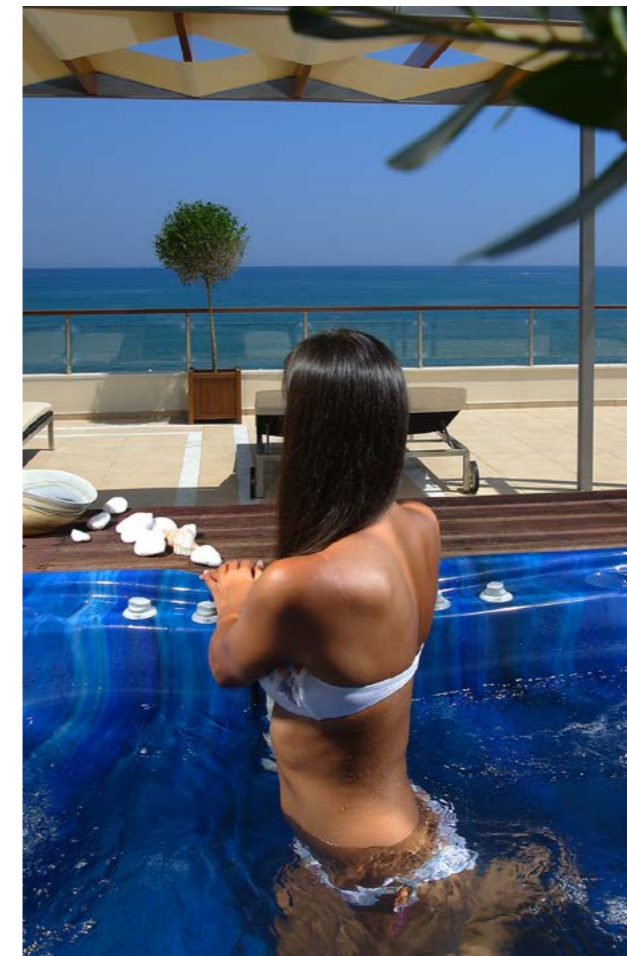
## Imperial Presidential Suite on the water front

**Max Occupancy:** 4 adults

105m2 individually designed suite located in the Imperial Building on the beach, with 200 m2 elegantly furnished private terrace with outdoor Jacuzzi and a breathtaking view of Chania Bay & the "Agioli Theodoroi" island. It consists of a master bedroom with double bed, second bedroom with twin beds and a separate spacious living room.

Extra features: 3 40" Satellite Smart TVs with music channel, DVD player, fax machine, direct dial phone, free Wi-Fi Internet connection (through DIA line), individual air condition/heating, tea & coffee making facilities (daily refill), Espresso machine, bathrobes, sun loungers in the balcony, mini bar, electronic safe box free of charge, 2 Marble bathrooms with internal bathtub/Jacuzzi, shower, phone, hairdryer and turndown service. Baby bed is offered free of charge & upon request.

Free private transfer from the airport of Chania.







Platanias, Chania

t. 28210 36500

f. 28210 36555

e. [info@minoapalace.gr](mailto:info@minoapalace.gr)

[www.minoapalace.gr](http://www.minoapalace.gr)

